

# Fidelity Audio Bluesound Node 2i Interface installation guide

1

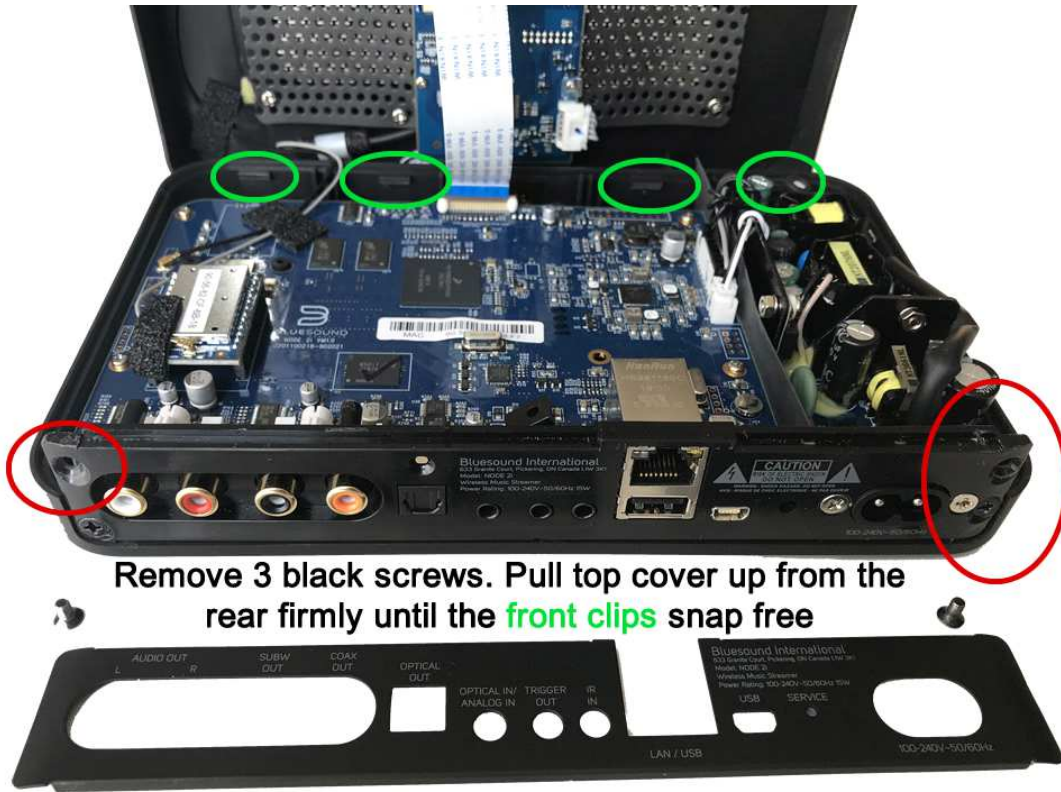


Remove back panel held by magnets.

2

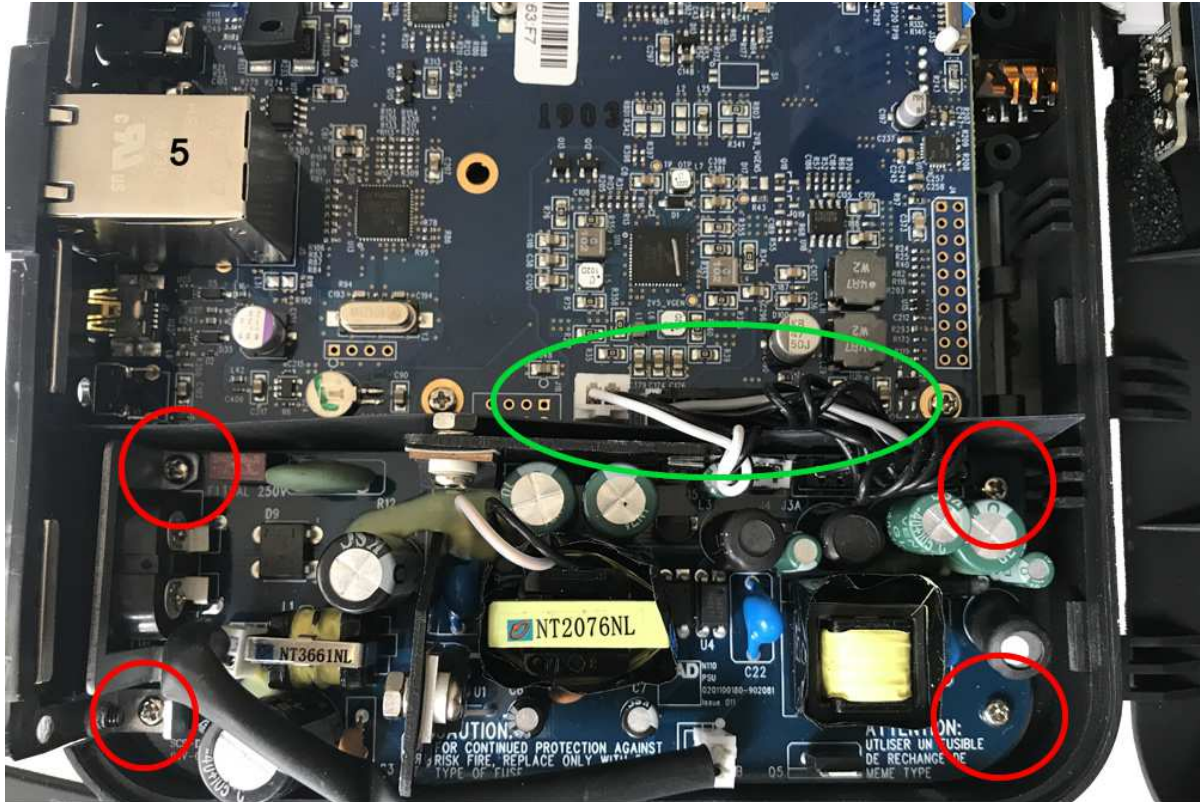


3



4





Remove 4 screws from pcb + metal bracket around ac inlet. Unplug the **two connectors** from the Bluesound pcb.

6



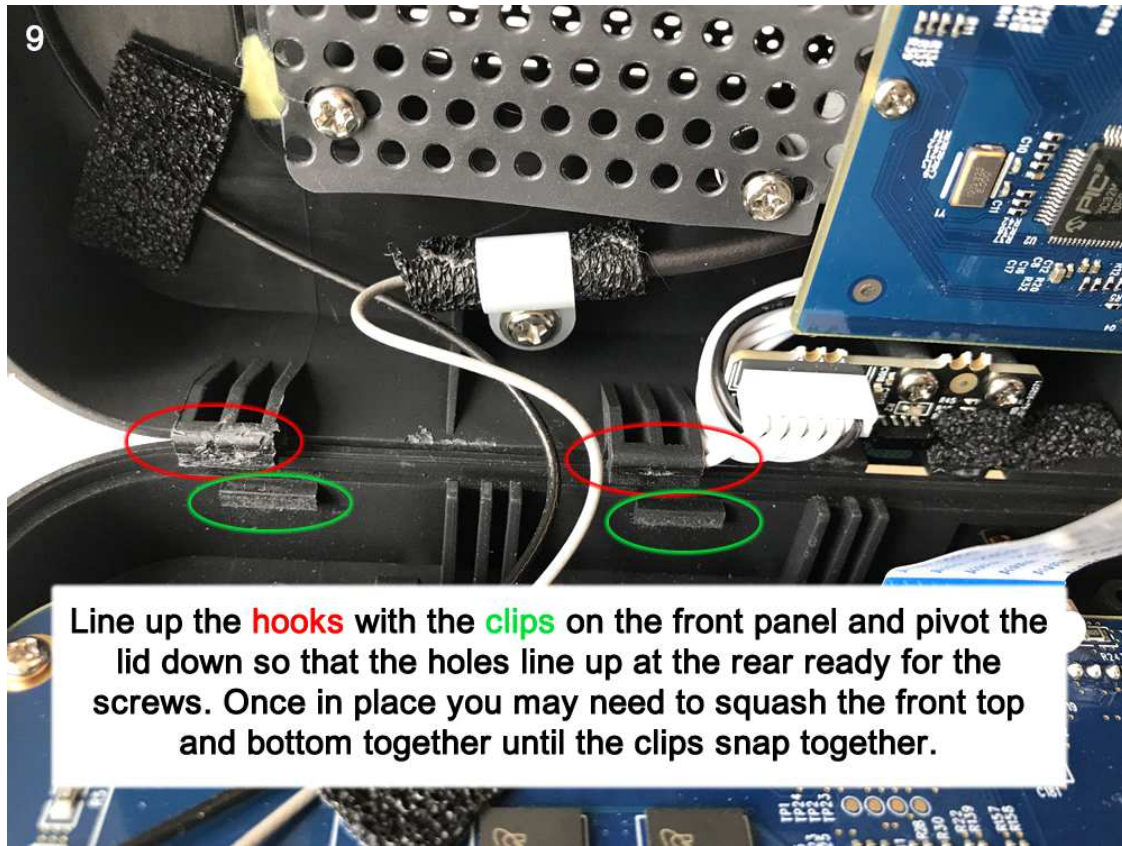


7



Installation is the opposite of removal.  
Install the Node 2i interface





Re fit the back panel and plug in your Fidelity Audio PSU via the dc socket.

